

# STUDY GUIDE

# Chapter 15

## Composition of Matter

One key term has been scrambled in each of the following statements. Unscramble the term. On the lines provided, rewrite the entire statement with the unscrambled term. Then find each unscrambled key term in the hidden word puzzle.

1. A(n) *ethgnesuoereo* mixture has different materials that are spread out unevenly.

\_\_\_\_\_

2. A(n) *oildclo* is a heterogeneous mixture whose particles never settle and are large enough to scatter light.

\_\_\_\_\_

1. A homogeneous mixture in which particles are so small that they cannot be seen without a microscope is a(n) *tuolsion*.

\_\_\_\_\_

4. A(n) *sssinnopue* is a liquid heterogeneous mixture in which visible particles settle.

\_\_\_\_\_

5. A(n) *ooudnmspc* is a material made from atoms of two or more combined elements.

\_\_\_\_\_

6. If all the atoms in a sample of matter are alike, that kind of matter is a(n) *neemetl*.

\_\_\_\_\_

7. A(n) *oogosuenehm* mixture has substances which are uniformly spread out.

\_\_\_\_\_

B E I R E C N L Y Q L P A D  
 H E T E R O G E N E O U S N  
 O M O D X L M S R G B P H O  
 M S A P D L C E F W G X C I  
 O Z V V U O S O R Q F O N S  
 G A T U T I P X Z A M Z O N  
 E U K T Y D O D E P P O I E  
 N J F S L M N F O B Q N S P  
 E L E M E N T U C U R M N S  
 O B H A C B N G H I H H E U  
 U N T I Z D K V I J L E P S  
 S O L U T I O N K Y D W S P

# REINFORCEMENT

# Chapter 15

## Composition of Matter

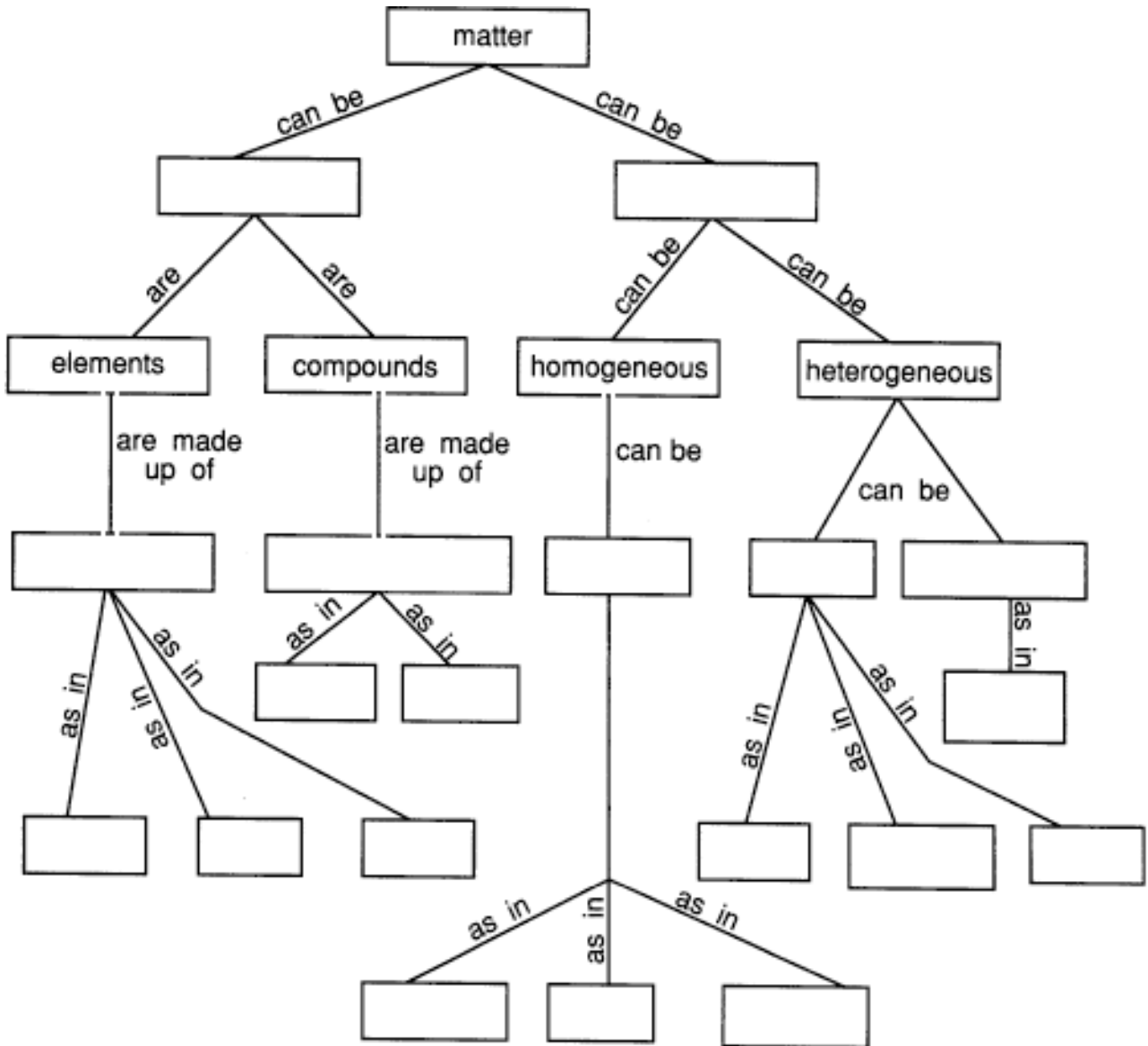
Use the words listed below to correctly complete the concept map.

Atoms (different)  
Gold  
Oxygen  
Solutions  
Vinegar

Atoms (same)  
Iron  
Salt  
Substances  
Water

Colloids  
Mixtures  
Smoke  
Suspensions  
Whipped cream

Fog  
Muddy water  
Soft drinks  
Syrup



# ENRICHMENT

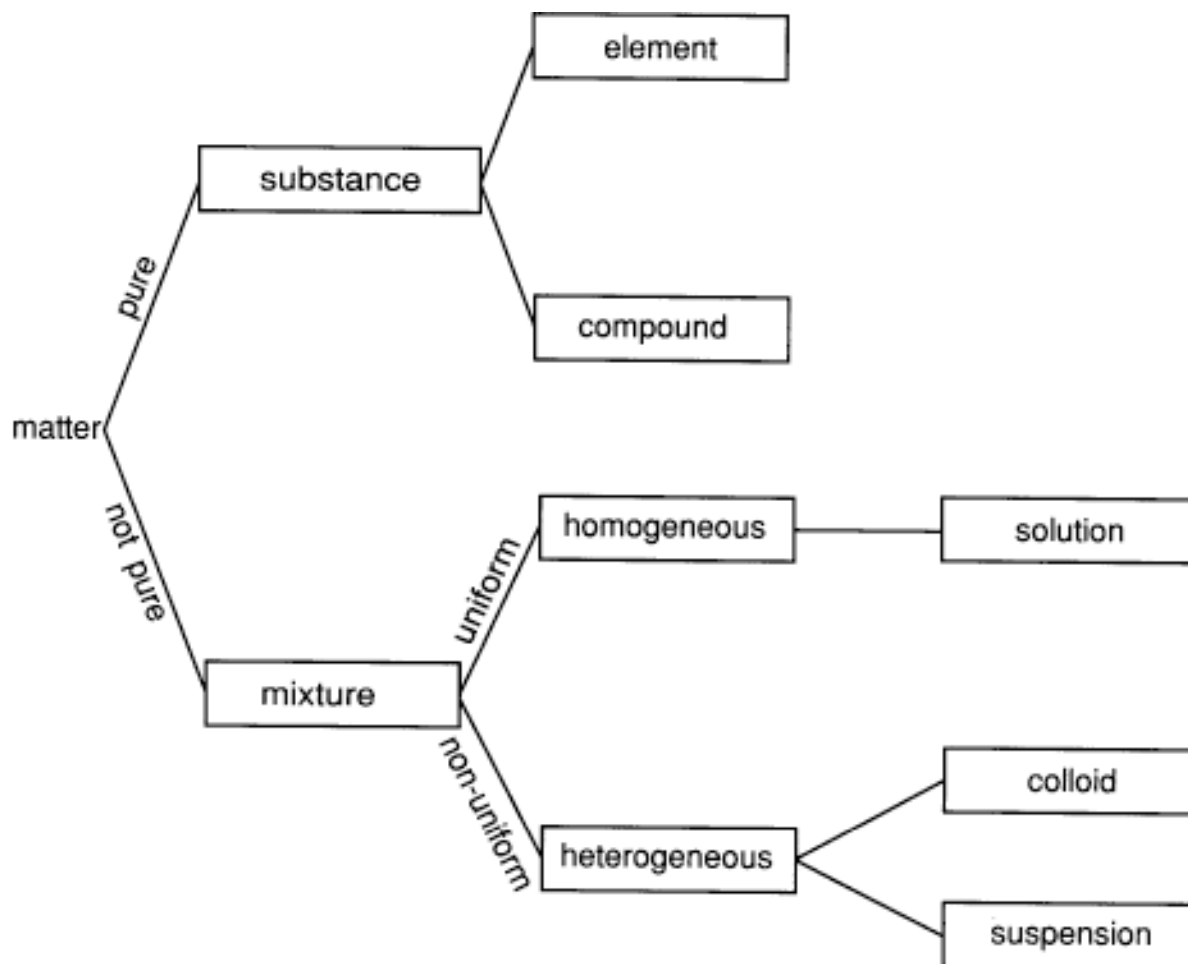
# Chapter 15

## Composition of Matter

### CLASSIFICATION OF MATTER

When classifying matter, it is helpful to organize your information in a useful way. One useful way to organize information is to use a dichotomous key. A dichotomous key is a key for the identification of items based on a series of choices between alternative characteristics. A dichotomous key showing the terms used to classify matter is drawn below.

Use this dichotomous key to classify the following types of matter.



1. copper \_\_\_\_\_
2. sodium chloride \_\_\_\_\_
3. muddy water \_\_\_\_\_
4. hot coffee \_\_\_\_\_